

**UGT-C5 Combustible gas sensor**

**FEATURES**

- Good long-term stability
- Excellent repeatability
- Superior linearity
- Strong vibration resistance
- Excellent anti-poisoning ability

**ELECTRICAL**

Supply Voltage	DC2.5±0.1V
Working current	DC170~190mA(at 2.5V)
Power consumption	<500mW
Zero point output	±25mV
Sensitivity	18~32mV / 20%LEL methane

**ENVIRONMENTAL**

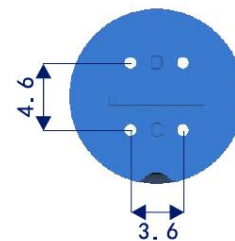
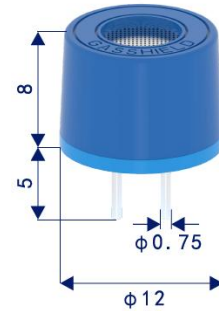
Operating Temperature Range	-40~+70°C
Operating Humidity Range	Continuity 15~90%RH Intermittent 0~99%RH

**STORAGE ENVIRONMENT**

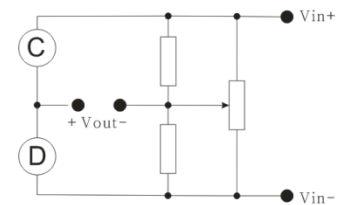
Recommended Storage Temp	-20~+50°C
Relative humidity	Below 95% RH (without condensation)

**TECHNICAL SPECIFICATION**

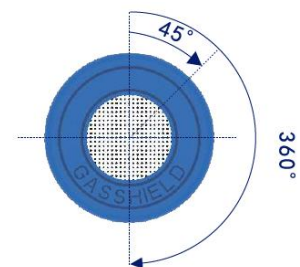
Measurement Range	0~100%LEL
Gas Detected	Most combustible gases & vapours
Accuracy	±3%LEL
Zero drift	±1%LEL
Linearity (0~100%LEL)	±3%(Calibrate at 60%LEL)
Full range deviation	±5%LEL
Response time	50%LEL T90<10s
Operating Principle	Catalytic combustion
Recovery time	15s
Operating life	5 years (in clean air)
Warranty period	2 years(from the date of shipment)



**Product Dimensions**



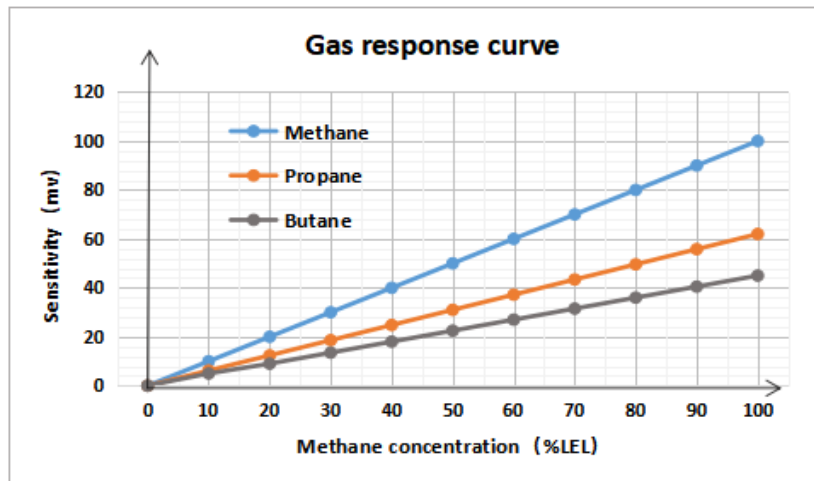
**Reference detection circuit**



**Orientation**

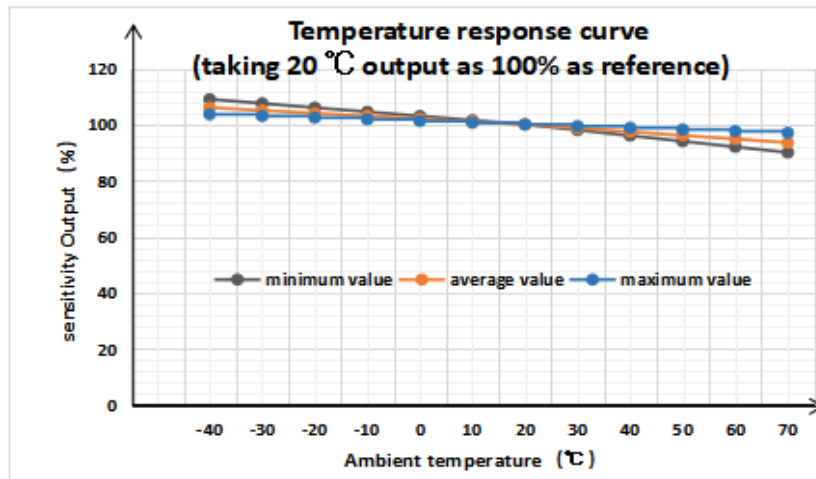
When the orientation of the sensor at the detection end and compensation end changes (the sensor rotates 360 °vertically), the change of the sensor output signal is ± 0.5% LEL

**Sensitivity characteristic**

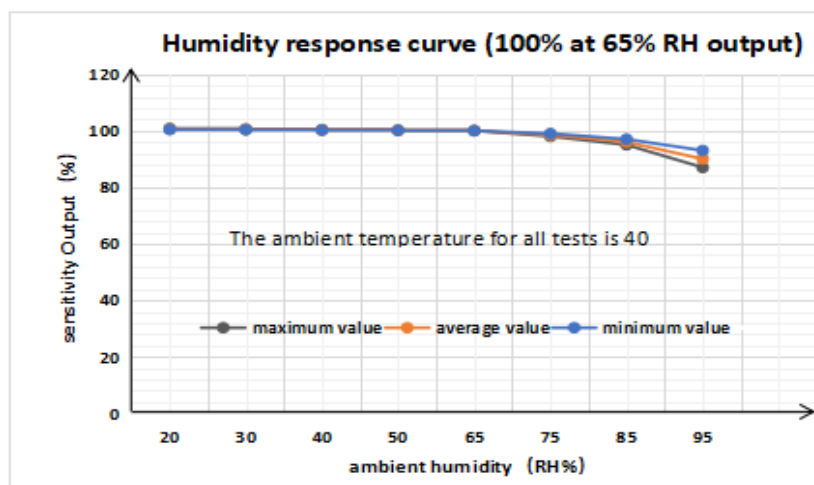


**Temperature response characteristics**

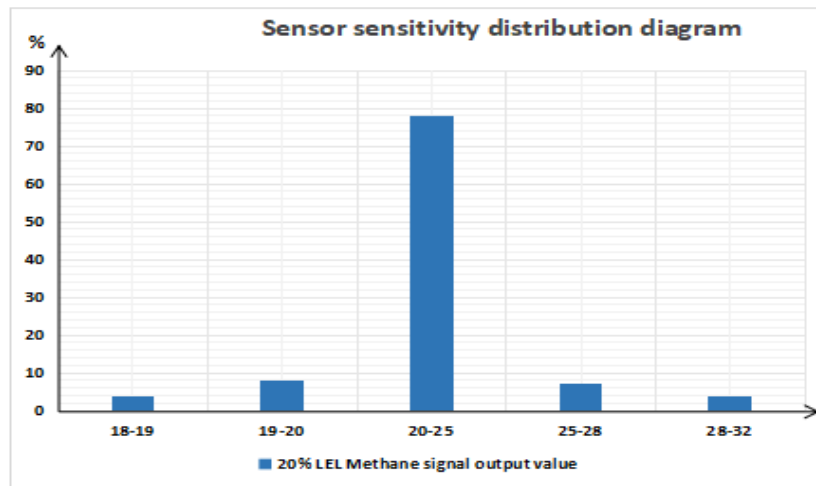
Sensitivity output of sensor zero point at relative ambient temperature. (i.e. sensitivity output after zero compensation)



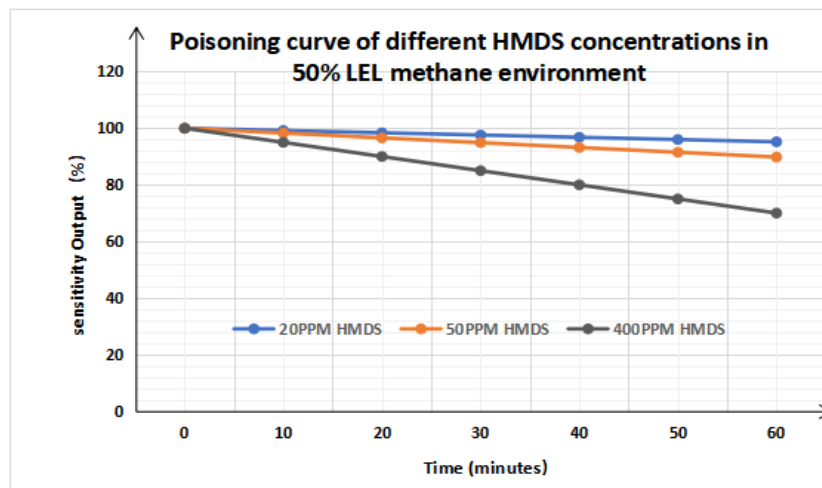
**Humidity response characteristics**



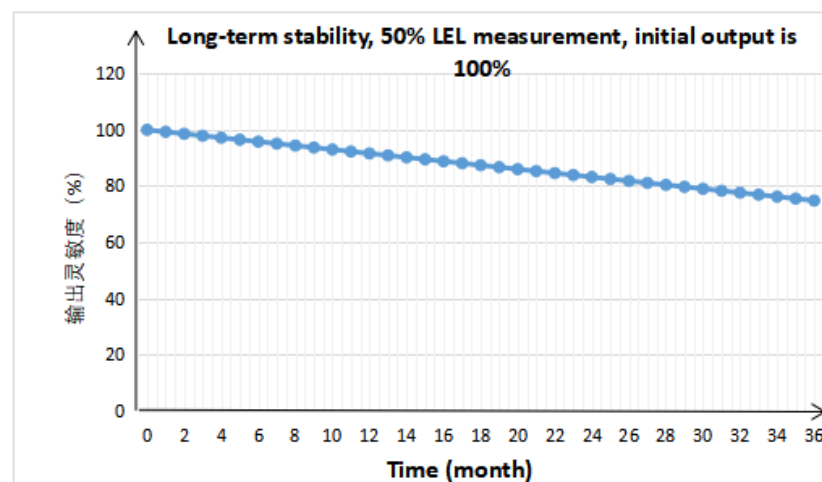
**Methane gas sensitivity distribution**



**Anti-toxicity ability**



**Long-term stability**



**Table 1 Sensitivity**

<b>Gas/steam</b>	<b>Relative sensitivity%</b>	<b>Gas/steam</b>	<b>Relative sensitivity%</b>
<b>Methane</b>	<b>100</b>	Isobutanol	40
Ammonia	110	Butanone	40
Hydrogen	72	Heptane	38
Ethylene	69	Cyclohexane	37
Propane	61	Ethyl acetate	37
Dimethyl ether	61	Octane	37
Diethyl ether	60	Toluene	35
Ethane	60	Pentane	35
Isobutane	55	N-octane (gasoline)	35
Ethanol	52	Acetic acid	35
Butane	44	N-pentane	33
Hexane	42	Chloromethane	28
Acetone	42	Methanol	27

The data contained in this document is intended for guidance only and it is the Clients' responsibility to perform any necessary tests to ensure correct performance of this product in specific application for which it is intended.

As this product may be used by the Client in circumstances outside the control of Our company, we cannot give any warranty as.

In the interest of product improvement, Our company reserve the right to alter and amend the product and its performance without notice.